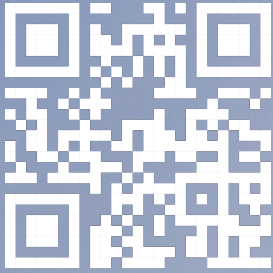




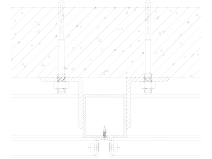
# Alüm™ Facade



Trademark and 2026 ©

Alüm™ Facade provides durability and versatility on exterior facade applications due to its resistance to harsh weather conditions and adaptability to different types of surfaces. The panels are easy to install and its material follows international fire safety standards, EN 13501-1 and Class A2 and B, ensuring both safety and functionality. Alüm™ Facade is the optimal choice for something contemporary and modern with a long-lasting and sturdy performance.

Installation



Section View

## Technical Specifications

|                           |   |
|---------------------------|---|
| Structure                 | Flat Panel, 50 x 50 x 2mm Square Hollow, Steel L Bracket                                    |
| Material                  | Fireproof PE Core<br>1100/3003 Aluminium Alloy  |
| Finishing                 | PE Coating, PVDF Coating  |
| Panel Thickness           | 3mm, 3.5mm, 4mm, 4.5mm, 5mm, 5.5mm, 6mm   |
| Aluminium Sheet Thickness | 0.08mm - 0.50mm   |
| Maximum Size              | 1570 x 4000mm   |
| Standard Panel Size       | 1220 x 2440 x 3mm<br>1220 x 2440 x 4mm  |
| Fire Classification       | EN 13501-1 = Class A2 s1, d0 (0.20 - 0.50mm)<br>EN 13501-1 = Class B s1, d0 (0.08 - 0.50mm) |